

Marking Solutions for Production and Storage



OPTIMAL MARKING FOR CORPORATE SUCCESS

Marking systems in warehouses, production plants and logistics are an essential part of work organisation. An intelligent choice of information and marking systems for material cards in the warehouse, transport marking or directions and announcements is vital for optimising production and logistics processes.

It has been proven in practice that this contributes to preventing errors and time-consuming searches. Document fastening and information systems are recommended for flexible labelling and made user-friendly by easy insertion and exchange of information materials. They also create order, cleanness, transparency and an organisational structure which gives staff members a quick overview.

The use of top-quality materials ensures a long service life for the DURABLE products. The range covers a great variety of applications, such as fastening by wire hangers or hinges, or magnetic and self-adhesive fastening systems. With its marking solutions for warehouses and production plants, DURABLE offers a range of robust and simultaneously extremely user-friendly products.

CONTENTS

Document sleeves for shelves and containers

- Logistic Pockets
 - Magnetic document pouches and sleeves 4
 - Self-adhesive document pouches and sleeves..... 5
 - Neodym magnetic document sleeves 6
 - Pallet hanging pockets..... 6
 - Pockets with binders 7
 - Pallet foot sleeve..... 7
 - Pockets with wire straps..... 7
- Self-adhesive pockets 8
- Display pockets, Self-laminating cards 9

Magnetic frames for metal surfaces

- DURAFRAME® MAGNETIC 10
- Magnetic pockets, Magnetic strip 13

Self-adhesive frames

- DURAFRAME® 14
- DURAFRAME® NOTE, CLICK SIGN 15

Information Display Systems

- VARIO® Display systems 16
- SHERPA® Infopanel, Floor stand 18
- DURAVIEW® STAND Floor stand 18

LOGISTIC POCKETS

People in the workplace rely on many visuals to aid them in their daily work. Therefore precise labelling is the basis for optimised production and storage processes.

Efficient labelling of parking spaces, production or storage areas guarantees a quick visual reference point. Logistical pockets increase efficiency and prevent mistakes. Deviations from a defined standard are immediately recognisable and can quickly be corrected.



Blue plastic back and transparent window made of heavy-duty polypropylene.
Suitable for scanners and tear-resistant. Inserts can be exchanged quickly.

Download templates for inserts on www.duraprint.eu



Magnetic Document Pouches

- › With two magnetic strips on the back
- › Use on metal surfaces, such as warehouse shelves, perforated metal walls and metal containers

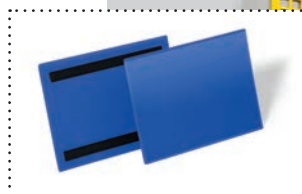


Internal dimensions (W x H)	External dimensions (W x H)	Prod. #	Colour	Packaging
100 x 38 mm	130 x 53 mm	1741...	...07 ●	50 pieces (pack)
150 x 67 mm	163 x 88 mm	1742...	...07 ●	50 pieces (pack)
210 x 74 mm*	223 x 81,5 mm	1757...	...07 ●	50 pieces (pack)
297 x 74 mm	311 x 81,5 mm	1758...	...07 ●	50 pieces (pack)

* 1/2 A5 landscape

Magnetic Document Sleeves

- › With two magnetic strips on the back
- › Use on metal surfaces, such as warehouse shelves, perforated metal walls and metal containers



Internal dimensions (W x H)	External dimensions (W x H)	Prod. #	Colour	Packaging
A6 landscape (148 x 105 mm)	163 x 120 mm	1756...	...07 ●	50 pieces (pack)
A5 landscape (210 x 148 mm)	223 x 163 mm	1743...	...07 ●	50 pieces (pack)
A4 portrait (210 x 297 mm)	223 x 313 mm	1744...	...07 ●	50 pieces (pack)
A4 landscape (297 x 210 mm)	311 x 225 mm	1745...	...07 ●	50 pieces (pack)



Adhesive Document Pouches

- › With two adhesive strips on the back
- › Use on metallic surfaces, such as warehouse shelves and containers



Internal dimensions (W x H)	External dimensions (W x H)	Prod. #	Colour	Packaging
100 x 38 mm	113 x 53 mm	1759...	...07 ●	50 pieces (pack)
150 x 67 mm	163 x 83 mm	1762...	...07 ●	50 pieces (pack)
210 x 74 mm*	223 x 81,5 mm	1794...	...07 ●	50 pieces (pack)
297 x 74 mm	311 x 81,5 mm	1796...	...07 ●	50 pieces (pack)

* 1/2 A5 landscape

Adhesive Document Sleeves

- › With two adhesive strips on the back
- › Use on metallic surfaces, such as warehouse shelves and containers



Internal dimensions (W x H)	External dimensions (W x H)	Prod. #	Colour	Packaging
A6 landscape (148 x 105 mm)	163 x 120 mm	1763...	...07 ●	50 pieces (pack)
A5 landscape (210 x 148 mm)	223 x 163 mm	1795...	...07 ●	50 pieces (pack)
A4 portrait (210 x 297 mm)	223 x 313 mm	1797...	...07 ●	50 pieces (pack)
A4 landscape (297 x 210 mm)	311 x 225 mm	1798...	...07 ●	50 pieces (pack)

Neodym Magnetic Document Sleeves

- › Strong adhesive force through two heat-sealed Neodym strong magnets
- › Use on metallic surfaces, such as meshed containers, pipes and moveable transport containers
- › Flap above the label window protects documents against dust and moisture
- › Material: polypropylene

Internal dimensions (W x H)	External dimensions (W x H)	Prod. #	Colour	Packaging
A5 landscape (210 x 148 mm)	223 x 218 mm	1746...	...07 ●	10 pieces (pack)
A4 portrait (210 x 297 mm)	223 x 368 mm	1747...	...07 ●	10 pieces (pack)
A4 landscape (297 x 210 mm)	311 x 280 mm	1748...	...07 ●	10 pieces (pack)

Blue plastic back and transparent window made of heavy-duty material.
Suitable for scanners and tear-resistant. Inserts can be exchanged quickly.



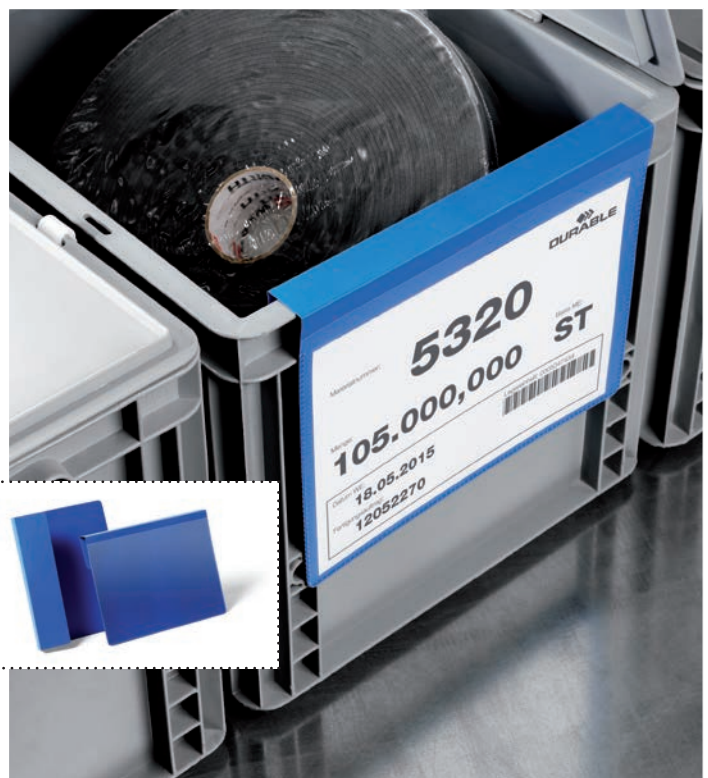
Download templates for inserts on www.duraprint.eu



Pallet Hanging Pockets

- › For identification of pallets and cartons
- › Insert between stacked cartons or hang on individual pallets
- › Folding header hangs from the edge of a pallet
- › Re-use time and time again

Internal dimensions (W x H)	External dimensions (W x H)	Prod. #	Colour	Packaging
A6 Querformat (148 x 105 mm)	168 x 216 mm	1721...	...07 ●	50 pieces (pack)
A5 Querformat (210 x 148 mm)	230 x 259 mm	1722...	...07 ●	50 pieces (pack)
A4 Querformat (297 x 210 mm)	317 x 321 mm	1723...	...07 ●	50 pieces (pack)



Pockets with Binders

- › With arrow-shaped straps which fasten through the slot in the pocket
- › Ideal for permanent use in warehouses
- › Flap above the label window protects documents against dust and moisture
- › Securely fastens on moveable transport containers, such as meshed containers
- › Material: polypropylene



Internal dimensions (W x H)	External dimensions (W x H)	Prod. #	Colour	Packaging
A5 landscape (210 x 148 mm)	223 x 380 mm	1749...	...07 ●	50 pieces (pack)
A4 portrait (210 x 297 mm)	223 x 530 mm	1750...	...07 ●	50 pieces (pack)
A4 landscape (297 x 210 mm)	311 x 442 mm	1751...	...07 ●	50 pieces (pack)



Pallet Foot Sleeves

- › For identification of pallets
- › Attaches to pallet feet via hook and loop fastener
- › All four sides of the sleeve can be labelled
- › Thumb cut-out makes insertion and replacement of labels easy

Internal dimensions (W x H)	External dimensions (W x H)	Prod. #	Colour	Packaging
140 x 65 mm 90 x 65 mm	596 x 75 mm	1724...	...07 ●	50 pieces (pack)

Pockets with Wire Straps

- › With galvanised, flexible wire for light and safe fixing
- › Use on transport containers, meshed containers, wooden support frames and pallet cartons
- › Flap above the label window protects documents against dust and moisture
- › Material: polypropylene

Internal dimensions (W x H)	External dimensions (W x H)	Prod. #	Colour	Packaging
A5 landscape (210 x 148 mm)	223 x 218 mm	1752...	...07 ●	50 pieces (pack)
A4 portrait (210 x 297 mm)	223 x 368 mm	1753...	...07 ●	50 pieces (pack)
A4 landscape (297 x 210 mm)	311 x 280 mm	1754...	...07 ●	50 pieces (pack)

DOCUMENT SLEEVES FOR SHELVES AND CONTAINERS

SELF-ADHESIVE POCKETS · DISPLAY POCKETS · SELF-LAMINATING CARDS

POCKETFIX®

Self-adhesive pockets for storage or presentation of documents. Ideal for use on lever arch files, folders, ring binders and bulletin boards.

- › Different versions, formats and pack sizes
- › For portrait and landscape use
- › Download templates for inserts on www.duraprint.eu



Format	Prod. #	Colour	Opening	Packaging
A4	8096...	...19	top opening	25 pieces (pack)
A4	8095...	...19	top opening	3 pieces (bag)
A4	8296...	...19	top opening	50 pieces (pack)
A4	8295...	...19	top opening	10 pieces (pack)
A5	8294...	...19	top opening	25 pieces (pack)
A5	8094...	...19	top opening	5 pieces (bag)
57 x 90 mm	8079...	...19	side opening	10 pieces (pack)
105 x 65 mm	8319...	...19	top opening	100 pieces (pack)

LABELFIX®

Self-adhesive labelling window. Ideal for labelling filing trays, shelves, drawers, cabinets and technical appliances.

- › 200 mm long strips can be cut to desired length
- › Download templates for inserts on www.duraprint.eu



Format	Prod. #	Colour	Opening	Packaging
200 x 10 mm	8010...	...19	side opening	10 pieces (bag)
200 x 15 mm	8015...	...19	side opening	10 pieces (bag)
200 x 20 mm	8020...	...19	side opening	10 pieces (bag)
200 x 30 mm	8030...	...19	side opening	10 pieces (bag)
200 x 40 mm	8040...	...19	side opening	10 pieces (bag)

SCANFIX®

Self-adhesive scanning strips for individual labelling.

- › 200 mm long strips can be cut to desired length
- › Open at the top and one side
- › Download templates for inserts on www.duraprint.eu



Format	Prod. #	Colour	Opening	Packaging
200 x 20 mm	8044...	...19	side/top opening	5 pieces (bag)
200 x 30 mm	8045...	...19	side/top opening	5 pieces (bag)
200 x 40 mm	8046...	...19	side/top opening	5 pieces (bag)

DISPLAY POCKETS

Display pockets with reinforced hole at the top of the pocket.

- › In portrait format, open at the top on the narrow side
- › Manufactured from extra-strong hardwearing polypropylene
- › Top opening with protective flap
- › Copy safe



Format	Prod. #	Colour	Opening	Packaging
A6	2302...	...19	top opening	10 pieces (bag)
A5	2306...	...19	top opening	10 pieces (bag)
A4	2307...	...19	top opening	10 pieces (bag)



SEAL IT

Transparent self-laminating cards for protection against creasing or soiling.

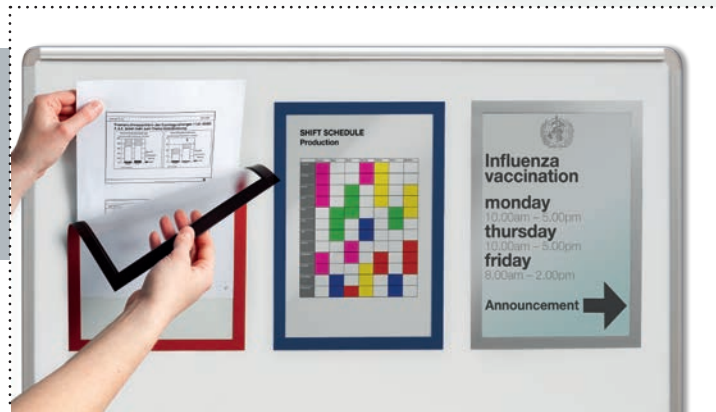
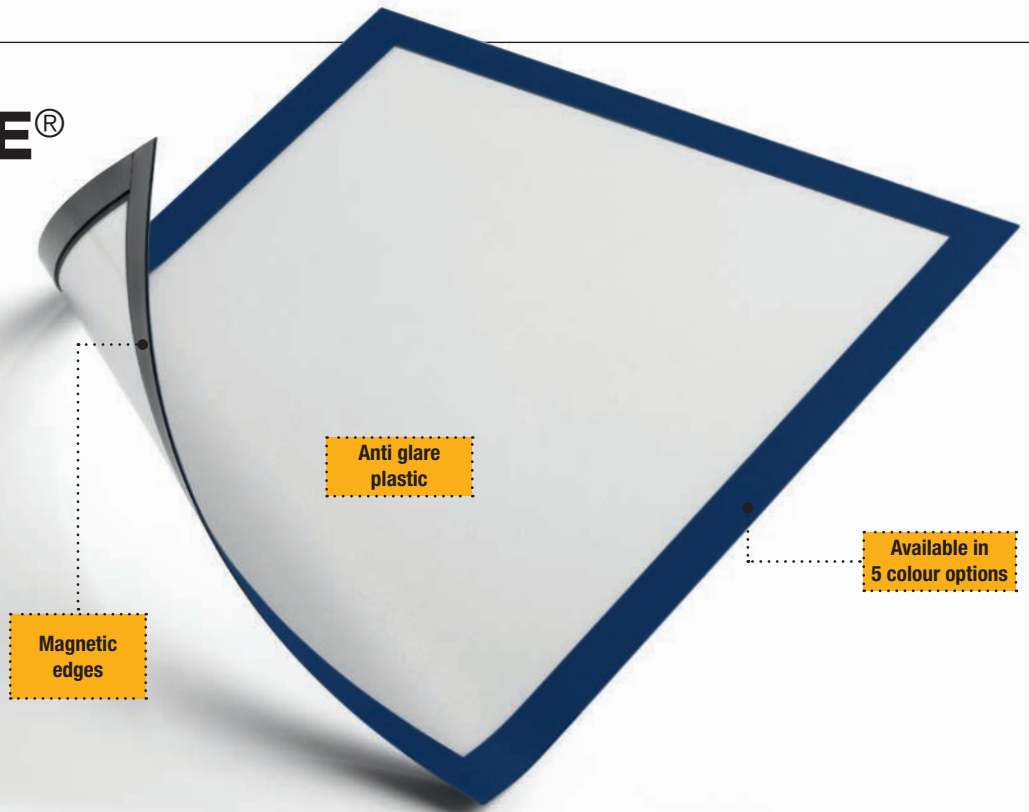
- › For quickly laminating of documents
- › No laminator needed



Format	Prod. #	Colour	Packaging
A4	8236...	...19	10 pieces (bag)
A4	8435...	...19	50 pieces (pack)
A6	8434...	...19	50 pieces (pack)
A7	8433...	...19	100 pieces (pack)

DURAFRAME® MAGNETIC

A magnetic frame to display information materials on metallic surfaces in production areas and offices, such as staff whiteboards, lean cubes, metal cabinets, racking and machinery.



For an overview on whiteboards, we recommend **DURAFRAME® MAGNETIC TOP** (page 12).

- › Quick, easy exchange of information materials
- › For portrait and landscape formats
- › Attaches to metallic surfaces
- › Anti glare plastic
- › Can be combined with the DURAVIEW® information signboard. You will find information on this on page 18.



Format	Prod. #	Frame Colour	Packaging
A6	4948...	...01 ● ...23 ◐	5 pieces (bag)
A5	4947...	...01 ● ...23 ◐	5 pieces (bag)
A4	4869...	...01 ● ...23 ◐ ...03 ● ...07 ● ...09 ●	5 pieces (bag)
A3	4868...	...01 ● ...23 ◐ ...03 ● ...07 ●	5 pieces (bag)

DURAFRAME® MAGNETIC SECURITY

Magnetic frame for eye-catching corporate signage. Ideal for displaying all types of safety and warning information. Attaches to metallic surfaces such as whiteboards, lean cubes, metal cabinets and machinery.

- › Eye-catching colours: green/white: First aid, Escape route maps; red/white: Fire safety, danger; yellow/black: Occupational safety, Warning or Hazard
- › Twin coloured frame compliant with ISO 3864-4 for safety colours
- › Quick, easy exchange of information materials through magnetic frame
- › For portrait and landscape formats
- › Sticks to metallic surfaces
- › Anti glare plastic

Format	Prod. #	Frame Colour	Packaging
A4	4945...	...130 ...131 ...132	5 pieces (bag)



DURAFRAME® MAGNETIC BOARD

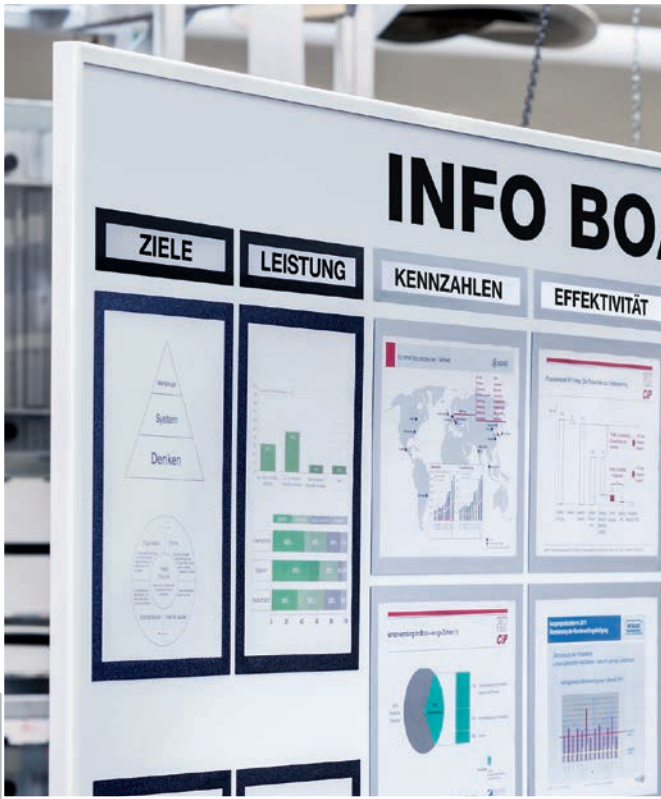
A versatile magnetic board for attractive presentation and structuring of information materials or for written notes.

- › Metal board with high-strength, durable powder coating
- › Writeable with commercially available whiteboard markers
- › For portrait and landscape formats
- › For use on walls in offices and at home.
- › Includes: Magnetic board including accessory kit with DURAFRAME® MAGNETIC (1x A4 silver, A5 black, A6 silver), 6 magnets Ø21 mm, pen holder 300 x 40 mm (W x D)



Size (W x H x D)	Prod. #	Colour	Packaging
450 x 600 x 15 mm	5001...	...10 ●	1 piece
600 x 900 x 15 mm	5002...	...10 ●	1 piece

DURAFRAME® MAGNETIC TOP



Magnetic frames for clear structuring of information materials on metallic surfaces.



- › Magnetic flexible frame for headings
- › Formats: Can be used for A4 portrait and A5 landscape formats, or A3 portrait and A4 landscape formats
- › Anti glare plastic

Format	Size	Prod. #	Frame Colour	Packaging
210 x 40 mm	A4 portrait A5 landscape	4986...	...01 ● ...23 ◉	5 pieces (bag)
297 x 40 mm	A3 portrait A4 landscape	4987...	...01 ● ...23 ◉	5 pieces (bag)

DURAFRAME® MAGNETIC PLUS

Magnetic pocket for the easy display of notices, information, literature and signage on metallic surfaces which can be easily replaced and removed by simply lifting the front panel and sealing shut.

- › Quick and easy exchange of information materials through fold-back magnetic frame
- › Inserts are kept in good condition
- › Protection of inserts from dust and moisture
- › Magnetic backing
- › For portrait and landscape formats
- › Anti glare plastic



Format	Prod. #	Frame Colour	Packaging
A4	4985...	...01 ● ...23 ◉	2 pieces (bag)

MAGNETIC POCKETS



Pocket with magnetic fixing for presenting A4 or A5 information.



- › For portrait and landscape formats
- › Information is easily removed and replaced by 2 open sides
- › Transparent PVC protects documents
- › Can be securely mounted onto metal surfaces

Format	Prod. #	Colour	Packaging
A4	4874...	...19 ○	2 pieces (bag)
A5	4875...	...19 ○	2 pieces (bag)



MAGNETIC STRIP

The self-adhesive strip adheres to many different surfaces and can be easily cut by scissors or knife.

- › Flexible self-adhesive metal strip
- › Adheres securely to all flat and smooth surfaces
- › Can be cut to the required length
- › 5 m long, 35 mm wide

Prod. #	Colour	Packaging
4715...	...02 ○	1 piece



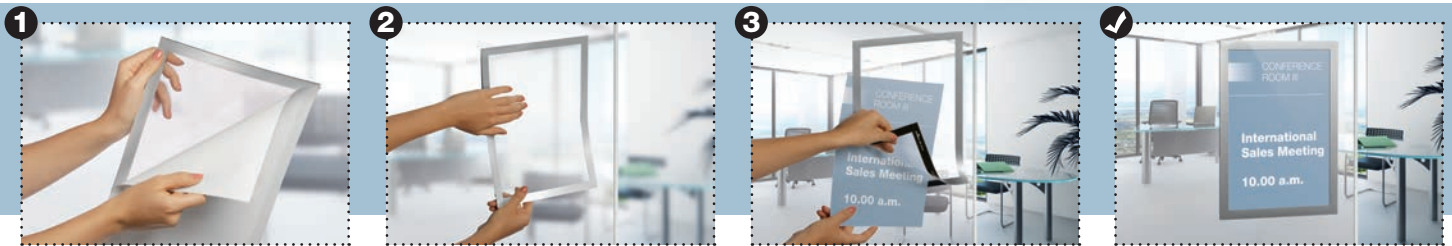
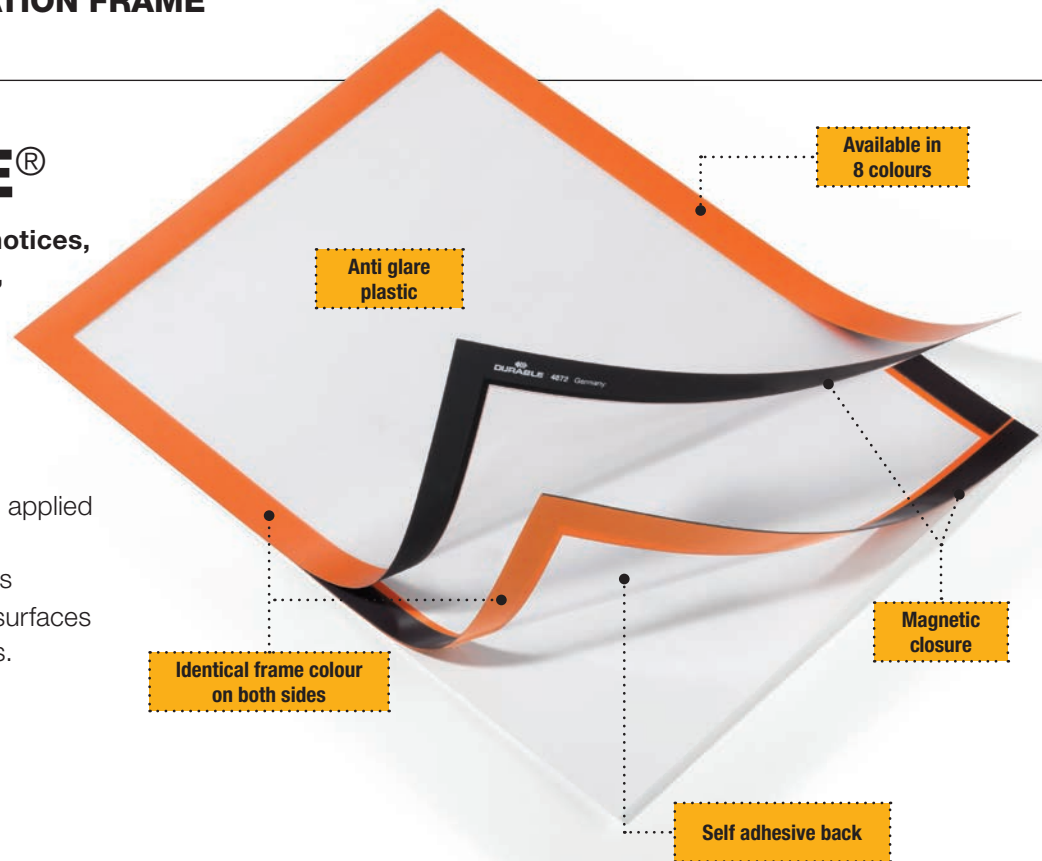
SELF-ADHESIVE INFORMATION FRAME

DURAFRAME®

DURAFRAME®

Self-adhesive flexible frame for notices, instructions, signage, directions, help or advertisements

- › Quick and easy exchange of information materials via fold-back magnetic frame
- › For portrait and landscape formats
- › Can be read from both sides when applied to glass
- › Identical frame look from both sides
- › Can be attached to smooth, solid surfaces and removed again, e.g. from glass. Further information on our website: www.durable.eu
- › Anti glare plastic



Format	Prod. #	Frame Colour	Packaging
A6	4897...	...01 ● ...23 ●	1 piece (bag)
	4870...	...01 ● ...23 ●	2 pieces (bag)
A5	4898...	...01 ● ...23 ●	1 piece (bag)
	4871...	...01 ● ...23 ●	2 pieces (bag)
	4881...	...01 ● ...23 ●	10 pieces (pack)
A4	4899...	...01 ● ...23 ● ...03 ● ...07 ●	1 piece (bag)
	4872...	...01 ● ...23 ● ...03 ● ...07 ● ...05 ● ...09 ● ...02 ○ ...30 ●	2 pieces (bag)
	4882...	...01 ● ...23 ● ...03 ● ...07 ● ...05 ● ...09 ● ...02 ○	10 pieces (pack)
A3	4838...	...01 ● ...23 ●	1 piece (bag)
	4873...	...01 ● ...23 ● ...03 ● ...07 ● ...05 ●	2 pieces (bag)
	4883...	...01 ● ...23 ● ...03 ● ...07 ● ...05 ● ...09 ●	6 pieces (pack)



DURAFRAME® NOTE

Self-adhesive flexible frame for the display of A4 sheets that can be written on directly.

- › Quick and easy exchange of inserts simply by lifting the magnetic panel
- › For writing directly on documents in A4 portrait or landscape format
- › Featuring a pen holder with fastening clip
- › Self-adhesive back for quick and simple attachment to smooth, solid surfaces
- › Stores up to 5 sheets of A4
- › Can be read from both sides when applied to glass
- › Matching coloured frame on both sides

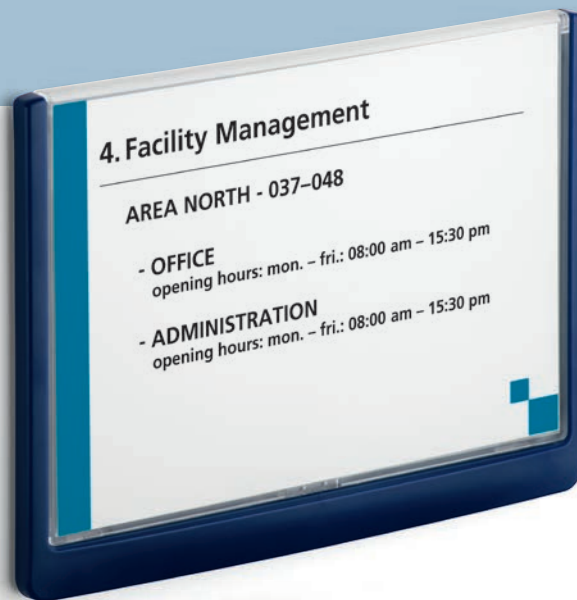


Format	Prod. #	Frame Colour	Packaging
A4	4993...	...01 ● ...23 ◯	1 piece (bag)

CLICK SIGN

Door signs with attractively styled round edges that combine modern design with functionality. Ideal for use in environments where information needs to be changed frequently, such as hotels and conference centres.

- › The sign inserts are easy to replace, simply lift and lower the transparent front panel
- › The signs can be securely fixed with screws or adhered in place.
- › A mounting kit and instructions are included with each sign



Format	Prod. #	Frame Colour	Packaging
A6	4861...	...02 ◯ ...03 ● ...07 ● ...37 ●	1 piece
A5	4866...	...02 ◯ ...03 ● ...07 ● ...37 ●	1 piece
A4	4867...	...02 ◯ ...03 ● ...07 ● ...37 ●	1 piece

INFORMATION SYSTEMS FOR WALL, TABLE, FLOOR

VARIO® DISPLAY PANEL SYSTEMS

Complete set for use on walls. Made of powder-coated sheet steel, with SHERPA® display panels in or A4 format.

VARIO® WALL 5

› With 5 SHERPA® display panels in A4 format in red, dark blue or orange

Prod. #	Colour	Packaging
5551...	...03 ● ...07 ● ...09 ●	1 set



VARIO® WALL 10

- › Ideal for long-term use
- › Optische Unterteilung durch die verschiedenen Farben der Tafeln
- › Contents: 1 wall bracket incl. fittings, 10 display panels (2 each in black, red, yellow, green, dark blue)
- › With 10 index tabs and blank insert labels for organisation

Prod. #	Colour	Packaging
5567...	...00 🇩🇪	1 set



Metal wall bracket with magnetic backing. With SHERPA® display panels in A4 format. Can be fastened quickly and easily to metal surfaces such as shelves or machine frames.

VARIO® MAGNET WALL 5

› With 5 SHERPA® display panels in A4 format

VARIO® MAGNET WALL 10

› With 10 SHERPA® display panels in A4 format and tabs with blank insert labels

Prod. #	Colour	Version	Packaging
5914...	...01 ●	With 5 display panels	1 set
5918...	...01 ●	With 10 display panels	1 set



Complete set for use on tables. Made of powder-coated sheet steel, with SHERPA® display panels in A4 format.

VARIO® TABLE 10

- › Ideal for long-term use
- › With 10 display panels (2 each in black, red, yellow, green, dark blue)
- › With 10 index tabs and blank insert labels for organisation

Prod. #	Colour	Packaging
5570...	...00 🌈	1 set



SHERPA® INFOBASE TELESCOPE

Floor stand with crystal-clear information panel made of acrylic. Ideal for trade fairs, exhibition areas, showrooms and applications in hotels and restaurants.

- › Telescopic rod and metal base with scratchproof powder coating
- › Adjustable angle of the display panel holder ensures optimal reading comfort
- › Height-adjustable (66–114 cm)
- › Adjustable reading angle +/-14°
- › Extremely stable base

Prod. #	Colour	Packaging
5589...	...57 ● I	1 set

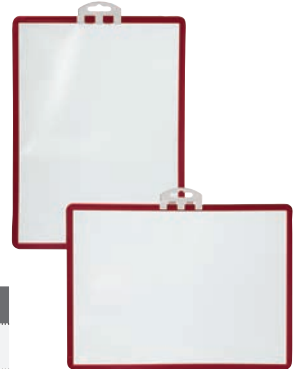


SHERPA® INFOPANEL

Ideal for displaying safety instructions and telephone numbers etc.

- › Made from antiglare polypropylene with red sturdy frame
- › with moveable positioning attachment (can be positioned portrait or landscape)

Prod. #	Colour	Packaging
5613...	...03 ● I	5 pieces (bag)



DURAVIEW®

Premium-quality signage made of powder-coated steel to be used as wall bracket, desktop or floor presenter in A4 and A3 formats.

The concave design provides an ergonomic reading angle. DURAVIEW® can be transformed from portrait to landscape format in just a few steps.

DURAVIEW® is ideal for the premium presentation of information in corporate buildings, hotels or restaurants.



DURAVIEW® STAND Floor presenter with DURAFRAME® MAGNETIC

- › Adjustable reading angle
- › Variable height

Format	dimensions portrait format	dimensions landscape format	Prod. #	Colour	Packaging
A4	300 x 770 – 1300 x 300 mm	320 x 725 – 1245 x 300 mm	4981...	...23 ●	1 piece
A3	375 x 820 – 1360 x 375 mm	445 x 765 – 1300 x 375 mm	4982...	...23 ●	1 piece



LOGISTIC POCKETS

	Format	Prod. #	Colour	Packaging
Magnetic document pouches	100 x 38 mm	1741...	...07 ●	50 pieces (pack)
	150 x 67 mm	1742...	...07 ●	50 pieces (pack)
	210 x 74 mm*	1757...	...07 ●	50 pieces (pack)
	297 x 74 mm	1758...	...07 ●	50 pieces (pack)
Magnetic document sleeves	148 x 105 mm (A6)	1756...	...07 ●	50 pieces (pack)
	210 x 148 mm (A5)	1743...	...07 ●	50 pieces (pack)
	210 x 297 mm (A4)	1744...	...07 ●	50 pieces (pack)
	297 x 210 mm (A4)	1745...	...07 ●	50 pieces (pack)
Self-adhesive document pouches	100 x 38 mm	1759...	...07 ●	50 pieces (pack)
	150 x 67 mm	1762...	...07 ●	50 pieces (pack)
	210 x 74 mm*	1794...	...07 ●	50 pieces (pack)
	297 x 74 mm	1796...	...07 ●	50 pieces (pack)
Self-adhesive document sleeves	148 x 105 mm (A6)	1763...	...07 ●	50 pieces (pack)
	210 x 148 mm (A5)	1795...	...07 ●	50 pieces (pack)
	210 x 297 mm (A4)	1797...	...07 ●	50 pieces (pack)
	297 x 210 mm (A4)	1798...	...07 ●	50 pieces (pack)
Neodym magnetic document sleeves	210 x 148 mm (A5)	1746...	...07 ●	10 pieces (pack)
	210 x 297 mm (A4)	1747...	...07 ●	10 pieces (pack)
	297 x 210 mm (A4)	1748...	...07 ●	10 pieces (pack)
Pallet hanging pockets	148 x 105 mm (A6)	1721...	...07 ●	50 pieces (pack)
	210 x 148 mm (A5)	1722...	...07 ●	50 pieces (pack)
	297 x 210 mm (A4)	1723...	...07 ●	50 pieces (pack)
Pockets with binders	210 x 148 mm (A5)	1749...	...07 ●	50 pieces (pack)
	210 x 297 mm (A4)	1750...	...07 ●	50 pieces (pack)
	297 x 210 mm (A4)	1751...	...07 ●	50 pieces (pack)
Pockets with wire straps	210 x 148 mm (A5)	1752...	...07 ●	50 pieces (pack)
	210 x 297 mm (A4)	1753...	...07 ●	50 pieces (pack)
	297 x 210 mm (A4)	1754...	...07 ●	50 pieces (pack)
Pallet foot sleeve	140 x 65 mm 90 x 65 mm	1724...	...07 ●	50 pieces (pack)

* 1/2 A5 landscape format

DOCUMENT SLEEVES

	Format	Prod. #	Colour	Packaging
POCKETFIX®	A4	8096...	...19 ○	25 pieces (pack)
	A4	8095...	...19 ○	3 pieces (bag)
	A4	8296...	...19 ○	50 pieces (pack)
	A4	8295...	...19 ○	10 pieces (pack)
	A4	8294...	...19 ○	25 pieces (pack)
	A5	8094...	...19 ○	5 pieces (bag)
	57 x 90 mm	8079...	...19 ○	10 pieces (pack)
	105 x 65 mm	8319...	...19 ○	100 pieces (pack)
LABELFIX®	200 x 10 mm	8010...	...19 ○	10 pieces (bag)
	200 x 15 mm	8015...	...19 ○	10 pieces (bag)
	200 x 20 mm	8020...	...19 ○	10 pieces (bag)
	200 x 30 mm	8030...	...19 ○	10 pieces (bag)
	200 x 40 mm	8040...	...19 ○	10 pieces (bag)
SCANFIX®	200 x 20 mm	8044...	...19 ○	5 pieces (bag)
	200 x 30 mm	8045...	...19 ○	5 pieces (bag)
	200 x 40 mm	8046...	...19 ○	5 pieces (bag)
DISPLAY POCKETS	A6	2302...	...19 ○	10 pieces (bag)
	A5	2306...	...19 ○	10 pieces (bag)
	A4	2307...	...19 ○	10 pieces (bag)
SEAL IT	A4	8236...	...19 ○	10 pieces (bag)
	A4	8435...	...19 ○	50 pieces (pack)
	A6	8434...	...19 ○	50 pieces (pack)
	A7	8433...	...19 ○	100 pieces (pack)

MAGNETIC FRAMES

	Format	Prod. #	Colour	Packaging
DURAFRAME® MAGNETIC	A6	4948...	...01 ● ...23 ○	5 pieces (bag)
	A5	4947...	...01 ● ...23 ○	5 pieces (bag)
	A4	4869...	...01 ● ...23 ○ ...03 ● ...07 ●	5 pieces (bag)
	A3	4868...	...01 ● ...23 ○ ...03 ● ...07 ●	5 pieces (bag)
DURAFRAME® MAGNETIC SECURITY	A4	4945...	...130 ● ...131 ● ...132 ●	5 pieces (bag)
DURAFRAME® MAGNETIC TOP	210 x 40 mm	4986...	...01 ● ...23 ○	5 pieces (bag)
	297 x 40 mm	4987...	...01 ● ...23 ○	5 pieces (bag)
DURAFRAME® MAGNETIC PLUS	A4	4985...	...01 ● ...23 ○	2 pieces (bag)
MAGNETIC POCKETS	A4	4874...	...19 ○	2 pieces (bag)
	A5	4875...	...19 ○	2 pieces (bag)
MAGNETIC STRIP	5m x 35 mm	4715...	...02 ○	1 piece

SELF-ADHESIVE FRAMES

	Format	Prod. #	Colour	Packaging	
DURAFRAME®	A6	4897...	...01 ● ...23 ○	1 piece (bag)	
	A6	4870...	...01 ● ...23 ○	2 pieces (bag)	
	A5	4898...	...01 ● ...23 ○	1 piece (bag)	
	A5	4871...	...01 ● ...23 ○	2 pieces (bag)	
	A5	4881...	...01 ● ...23 ○	10 pieces (pack)	
	A4	4899...	...01 ● ...23 ○ ...03 ● ...07 ●	1 piece (bag)	
	A4	4872...	...01 ● ...23 ○ ...03 ● ...07 ● ...05 ● ...09 ● ...02 ○ ...30 ○	2 pieces (bag)	
	A4	4882...	...01 ● ...23 ○ ...03 ● ...07 ● ...05 ● ...09 ● ...02 ○	10 pieces (pack)	
	A3	4838...	...01 ● ...23 ○	1 piece (bag)	
	A3	4873...	...01 ● ...23 ○ ...03 ● ...07 ● ...05 ●	2 pieces (bag)	
	A3	4883...	...01 ● ...23 ○ ...03 ● ...07 ● ...05 ● ...09 ●	6 pieces (pack)	
	DURAFRAME® NOTE	A4	4993...	...01 ● ...23 ○	1 piece (bag)
	CLICK SIGN	A4	4867...	...02 ○ ...03 ● ...07 ● ...37 ●	1 piece
		A5	4866...	...02 ○ ...03 ● ...07 ● ...37 ●	1 piece
		A6	4861...	...02 ○ ...03 ● ...07 ● ...37 ●	1 piece

INFORMATION DISPLAY SYSTEMS

	Format	Prod. #	Colour	Packaging
VARIO® WALL 5	A4	5551...	...03 ● ...07 ● ...09 ●	1 set
VARIO® MAGNETIC WALL 5	A4	5914...	...01 ●	1 set
VARIO® MAGNETIC WALL 10	A4	5918...	...01 ●	1 set
VARIO® WALL 10	A4	5567...	...00 ●	1 set
VARIO® TABLE 10	A4	5570...	...00 ●	1 set
SHERPA® INFOBASE TELESCOPE	A4	5589...	...57 ●	1 set
SHERPA® INFOPANEL	A4	5613...	...03 ●	5 pieces (bag)
DURAVIEW® STAND	A4	4981...	...23 ○	1 piece
	A3	4982...	...23 ○	1 piece



DURABLE · Hunke & Jochheim GmbH & Co. KG

Westfalenstraße 77-79 · 58636 Iserlohn
Postfach 1753 · 58634 Iserlohn
Telefon (02371) 662-0 · Telefax (02371) 662-221
durable@durable.de · www.durable.de

INTERNATIONAL

DURABLE · Hunke & Jochheim GmbH & Co. KG
Westfalenstraße 77-79 · 58636 Iserlohn
P.O. Box 1753 · 58634 Iserlohn · Germany
Phone +49-2371-662-0 · Fax +49-2371-662-221
durable@durable.de · www.durable.eu

FR

DURABLE France S.A.S
Immeuble Le Tryalis · 9, rue de Rosny
93100 Montreuil
Téléphone : 01 48 12 10 90 · Télécopie : 01 48 55 05 09
durable@durable.fr · www.durable.fr

NL

DURABLE Nederland B.V.
Monierweg 3 · 7741 KV Coevorden
Tel. 0416 543 543 · Fax 0416 543 058
durable@durable.nl · www.durable.nl

PL

Biuro Obsługi Klienta DURABLE Polska
Al.Kasztanowa 10 · 72-005 Przeclaw
Tel: 091 432-40-70 · Fax: 091 432-40-83
bok@durable.pl · www.durable.pl

SE

DURABLE SCANDINAVIA AB
Fågelsångsvägen 4B · 186 42 Vallentuna
Box 4 · 186 21 Vallentuna
Telefon: 08 - 630 11 50 · Fax: 08 - 630 02 22
info@durable.se · www.durable.se

UK

DURABLE (UK) Ltd.
10 Nimrod Way, Wimborne, Dorset, BH21 7SH
Phone 01202 89 70 71 · Fax 01202 87 33 81
customeroperations@durable-uk.com
www.durable-uk.com

BE

DURABLE Belgium N.V./S.A.
Industriepark 14/101 · 9031 Gent-Drongen
Tel. 09/281 26 44/45 · Fax 09 281 26 29
durable@durable.be · www.durable.be

IT

DURABLE Italia S.R.L.
Via Dottor Pietro Greppi, 15/B · 23824 Dervio (LC)
Tel: 0341 807806 · Fax: 0341 806683
info@durable.it · www.durable.it

RU

Представительство компании DURABLE в России
123290, г. Москва,
ул. 2-я Магистральная, д. 14Г, бизнес-центр МЕЛА
Тел\Факс: +7 495 601-92-13
durable_russia@mail.ru · www.durable-russia.com

US

DURABLE Office Products Corp.
2475 S. Wolf Road · Des Plaines, IL 60018
Voice: 800-273-3118 / 847-787-0100
Fax: 847-787-0311
customerservice@durableofficeproducts.com
www.durable-north-america.com